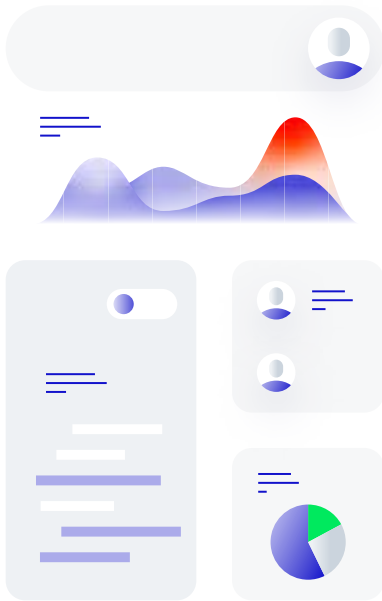


# Datasheet



Logmanager is a log management platform enhanced with SIEM capabilities that radically simplifies response to cyberthreats, legal compliance, and troubleshooting.

It is available as either a hardware appliance or a virtual appliance compatible with VMware and HyperV platforms. The hardware requirements for virtual appliances are identical to hardware models specification.

---

## Supported log sources

Logmanager natively supports over 135 sources across all IT domains, including security solutions, networking, virtualization, operating systems, databases, and cloud applications. The extensive list continues to grow with each update. Logmanager also supports standardized structured log formats such as CEF, LEEF, RFP5424, and JSON. For legacy sources, it enables quick and easy creation of customized parsers.

---

## Forwarder

Logmanager Forwarder is a standalone appliance hardware or virtual providing secure and reliable log collection from remote branches and Internet/DMZ.

## Logmanager HW Appliances Recommended Resources for Virtual Appliances

	Logmanager-XL	Logmanager-L	Logmanager-M	Logmanager-S	Logmanager Forwarder
Performance in EPS <sup>1</sup>	10000	5000	2000	1000	9000
Data Retention in Days	~440 - 800	~275 - 550	~230	~150	N/A; acts as remote buffer
Storage	120 - 220 TB	40 - 80 TB	12TB	4TB	250GB
Memory	128GB	128GB	64GB	64GB	8GB
RAID	RAID 6	RAID 6	RAID 5	RAID 1	N/A
Hardware Details	2U server, 2x PSU, Workload Accelerator, 5y NBD RMA, 1-year support renewals or 5-year contract	2U server, 2x PSU, 5y NBD RMA, 1-year support renewals or 5-year contract	1U server, 2x PSU, 5y NBD RMA, 1-year support renewals or 5-year contract	1U server, 1x PSU, 5y NBD RMA, 1-year support renewals or 5-year contract	MicroPC platform, 5y RMA, 1-year support renewals or 5-year contract

### Optional addons and Scaling

**Network port extension** - Extend the default 1G network ports with 2 or 4 10G SFP+. SFP+ transceivers included.

**Cluster** - Allows creation of clusters up to 4 units serving more than 10000 EPS. Cluster DB capacity equals sum of all cluster members capacity divided by two.

<sup>1</sup> **Performance in EPS** - Maximum sustainable load measured in Events Per Second (EPS) for a standalone Logmanager unit, also known as Max Constant EPS. Raw log mix with average size 700 Bytes, tested with full parsing. Peak EPS equals 2x the Max Constant EPS over 10 minutes.

**Licensing** - All versions include unlimited number of agents, sources and system users.

# Get in touch

Do you want to know more about Logmanager?

Drop us a line at [sales@logmanager.com](mailto:sales@logmanager.com), and our expert team will provide you with all the insights you need to assess how Logmanager fits your needs.